

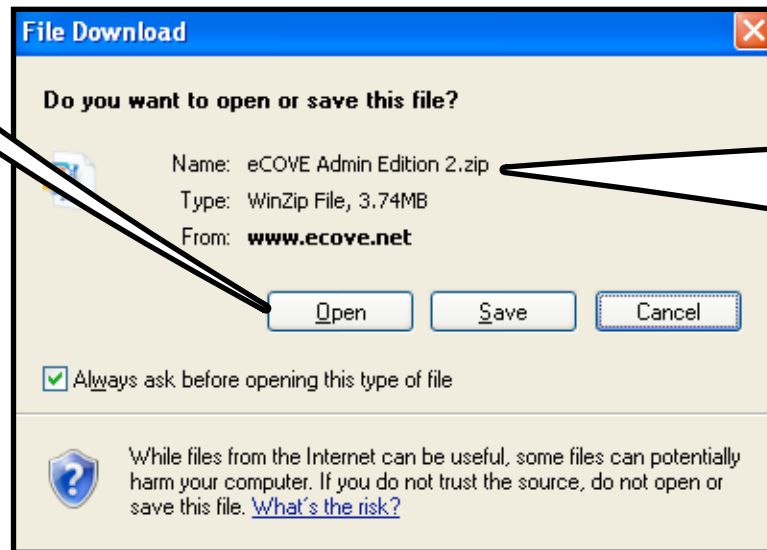
downloading and installing windows eCOVE

CLICK THE LINK TO THE DOWNLOAD YOU WANT



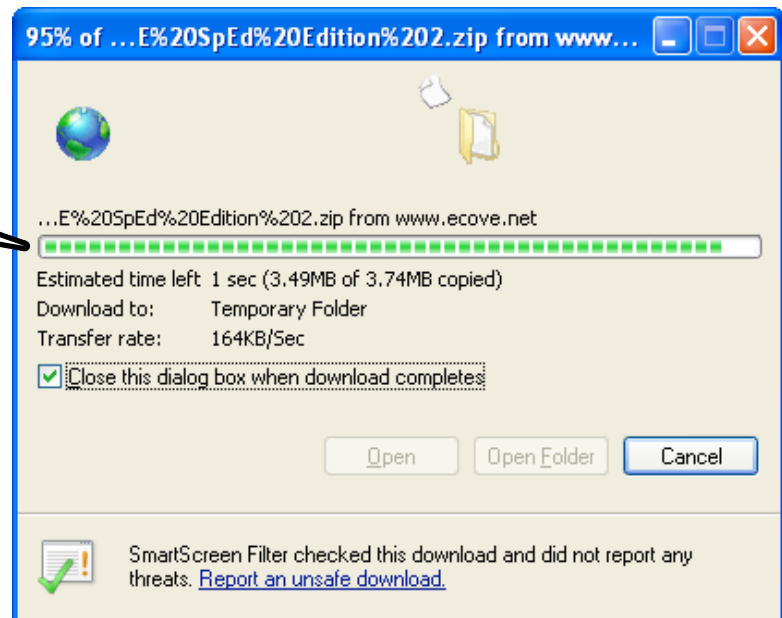
CLICK 'OPEN'

THIS WILL OPEN THE ZIP FILE AND START THE PROCESS


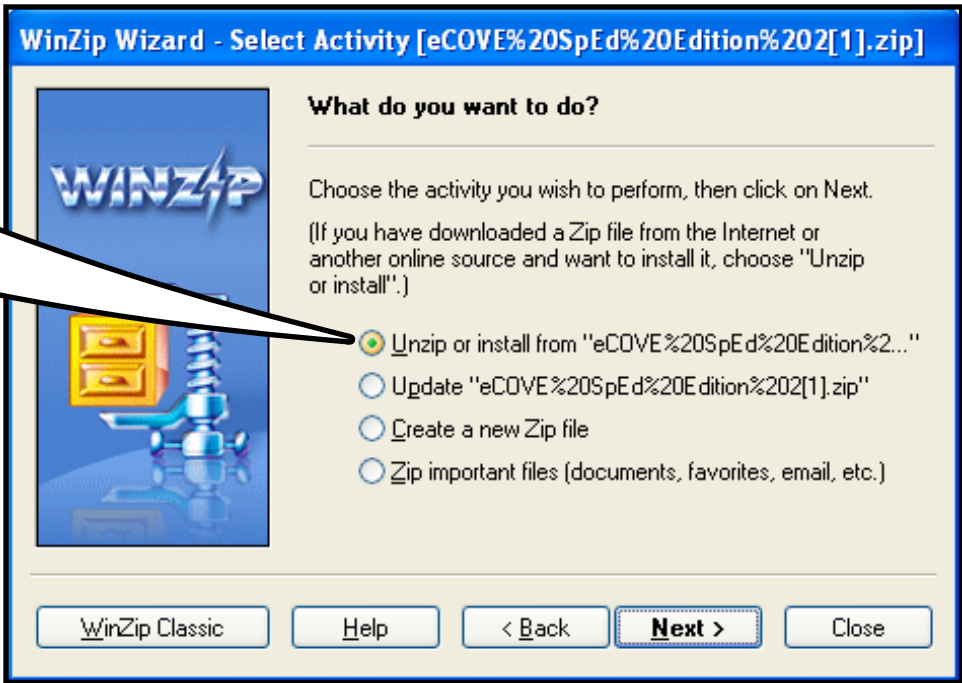


YOU ARE DOWNLOADING A ZIP FILE AND WILL NEED AN UNZIPPER PROGRAM SUCH AS WINZIP

YOU'LL SEE THE PROGRESS BAR AS IT DOWNLOADS



YOUR UNZIP PROGRAM WILL OPEN. IT MIGHT LOOK DIFFERENT, BUT CHOOSE 'UNZIP' OR 'EXTRACT'



WINZIP
A Corel® company

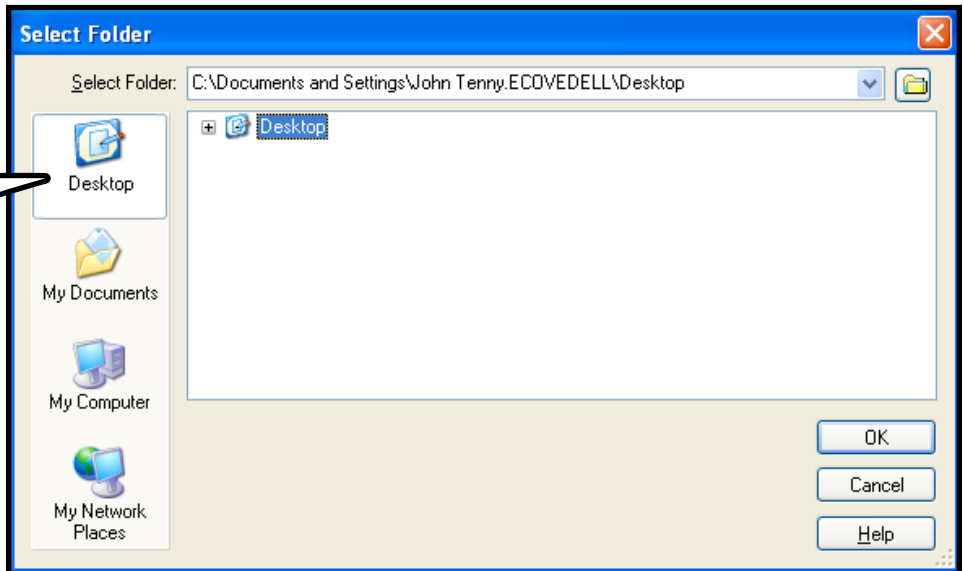
IF YOU DON'T HAVE AN UNZIP PROGRAM ON YOUR COMPUTER, GO HERE TO DOWNLOAD WINZIP, EITHER THE 'EVALUATION' OR THE 'FREE' VERSION

[HTTP://WWW.WINZIP.COM/DOWNWZ.HTM](http://www.winzip.com/downwz.htm)

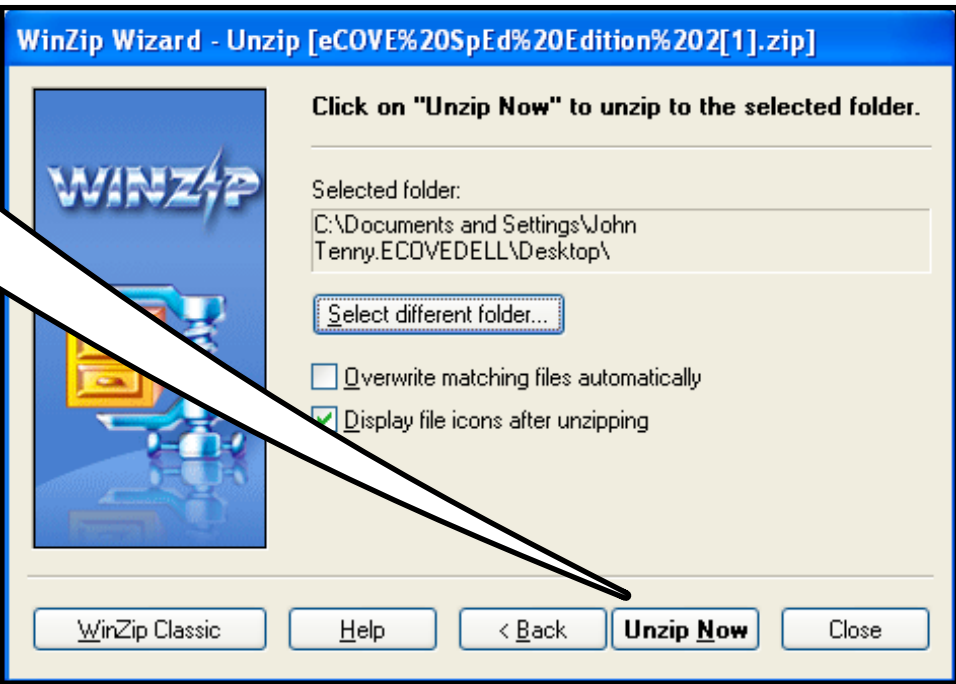
2

- DOWNLOAD EVALUATION
- BUY WINZIP NOW
- GET WINZIP FREE

IT WILL ASK WHERE YOU WANT TO SAVE IT. THE DESKTOP IS A GOOD CHOICE (EASY TO FIND)

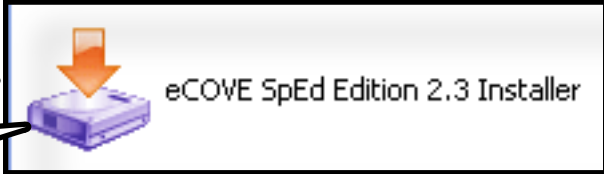


SELECT 'UNZIP' OR (IF A DIFFERENT UNZIP PROGRAM) 'EXTRACT'

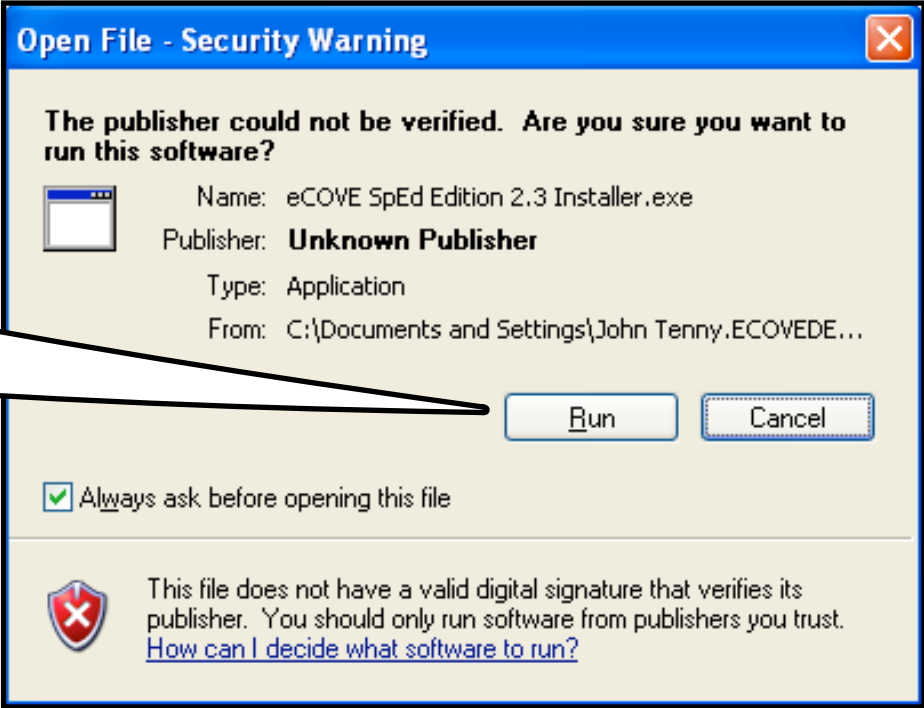


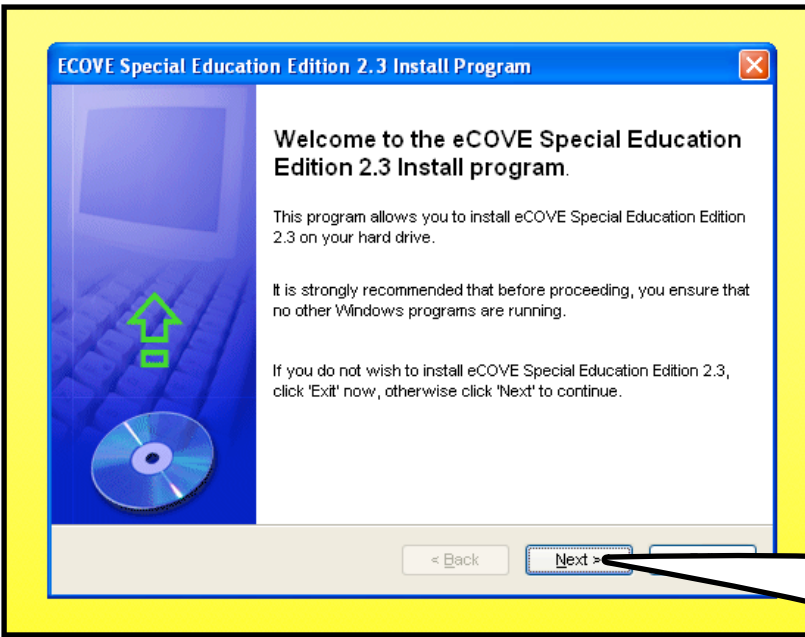
YOU'LL SEE A PROGRESS BAR GO BY REALLY FAST. LOOK FOR THIS FILE WHERE EVER YOU CHOSE TO SAVE IT (DESKTOP?)

DOUBLE CLICK IT

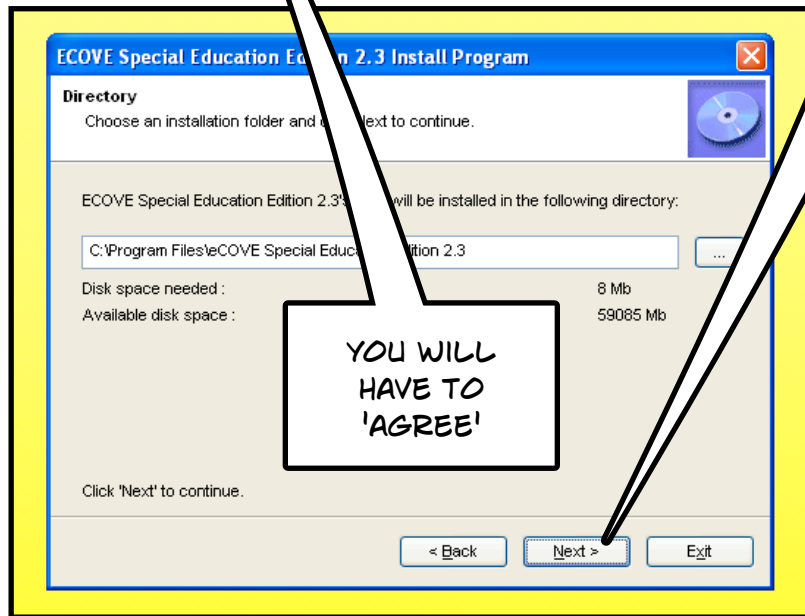
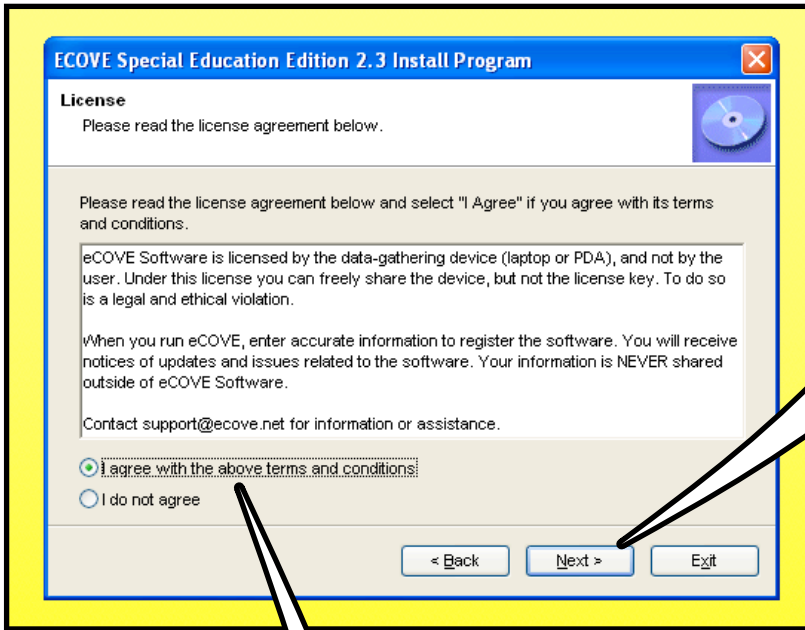


YOU'LL PROBABLY GET A WARNING DEPENDING ON YOUR SECURITY SETTINGS. CLICK RUN/GO/YES OR THE LIKE

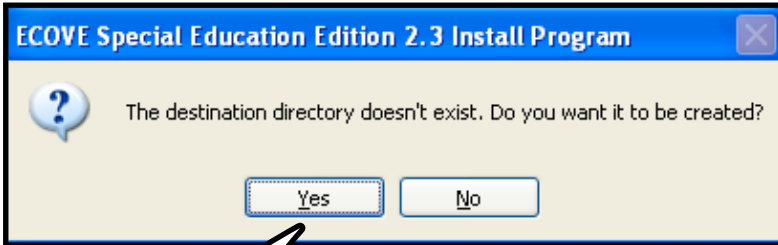




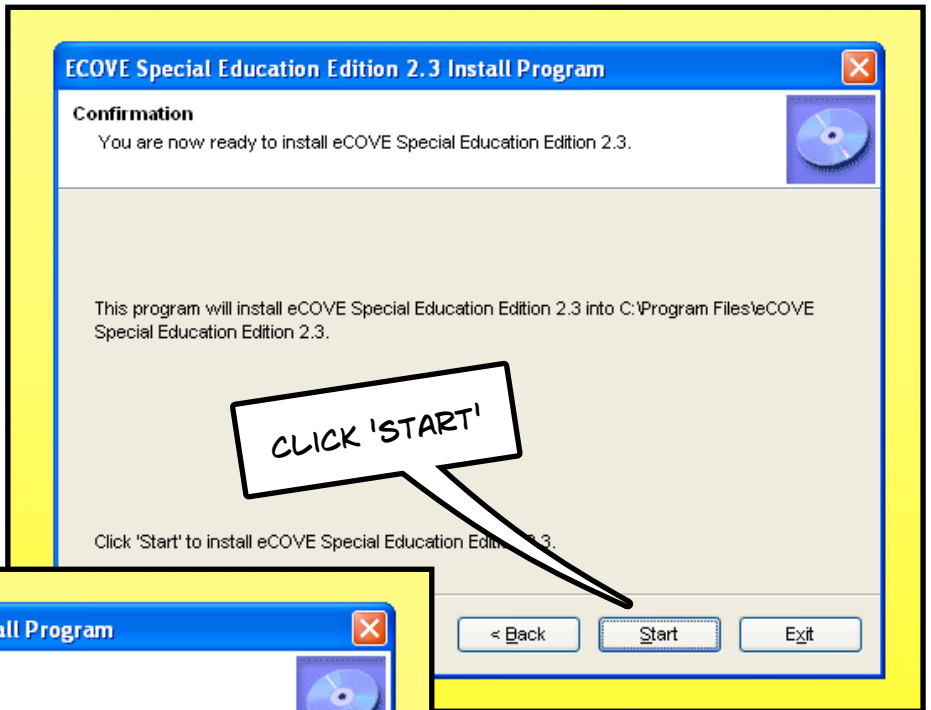
YOU'LL SEE A SERIES OF SCREENS. GENERALLY YOU CAN LEAVE THE DEFAULTS AS IS AND JUST CLICK 'NEXT'



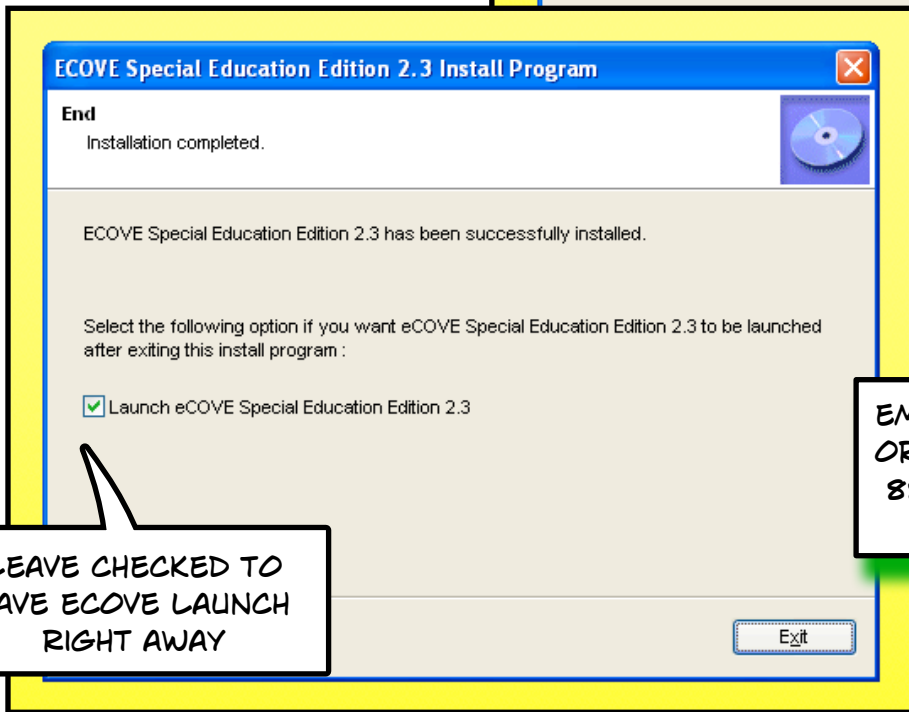
YOU WILL HAVE TO 'AGREE'



IT IT'S THE FIRST TIME YOU'VE DOWNLOADED THIS VERSION, IT WILL ASK TO CREATE THE DIRECTORY. SAY 'YES'



CLICK 'START'



LEAVE CHECKED TO HAVE ECOVE LAUNCH RIGHT AWAY

EMAIL SUPPORT@ECOVE.NET OR CALL 888-363-2683 FOR ASSISTANCE

THIS WILL APPEAR ON THE WEBPAGE. DOWNLOAD THE MANUALS AND EXPLORE OTHER LINKS FOR PROGRAM ASSISTANCE.

Thank you for downloading Windows Special Education Edition v2.3
Contact support@ecove.net if you have questions or need assistance.
Here are some helpful links:
[Advanced Edition Manuals and help documents](#)
[Frequently Asked Questions](#)
[Build Your Own Toolsets](#)
[User Forum](#) - Ask questions and find answers