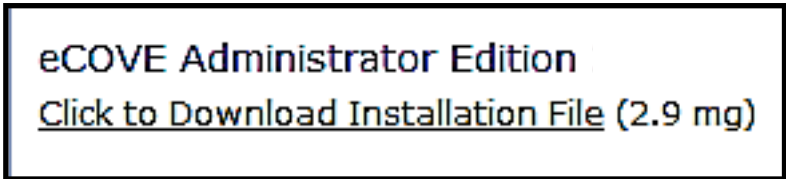


# Installing eCOVE on Windows

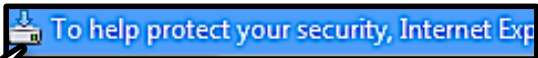
1

START BY CLICKING THE DOWNLOAD LINK



2

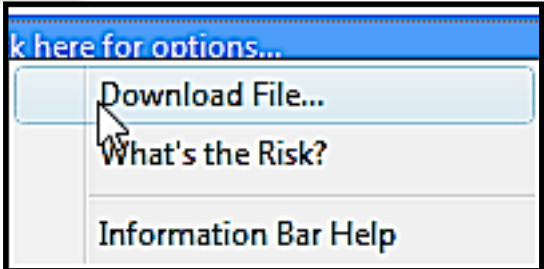
RIGHT ABOVE THE ECOVE SCREEN A SECURITY BAR WILL APPEAR THAT SAYS "TO HELP PROTECT YOUR SECURITY,....."



CLICK ON THE BAR TO PROCEED

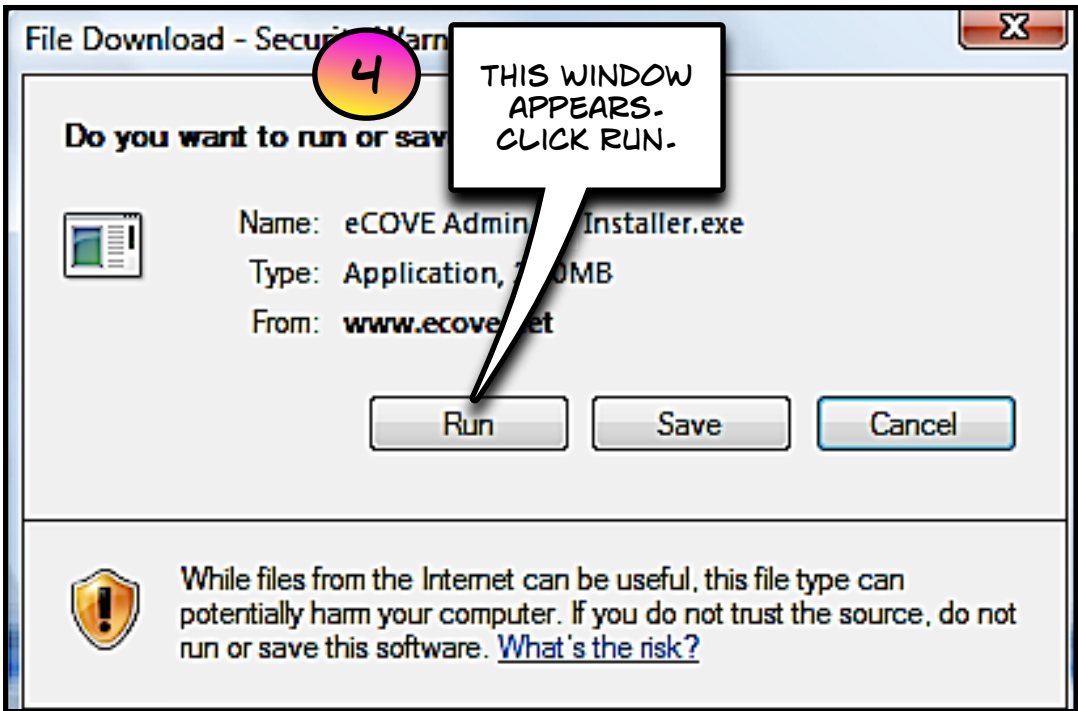
3

A SMALL WINDOW WILL APPEAR - CLICK ON 'DOWNLOAD FILE...'



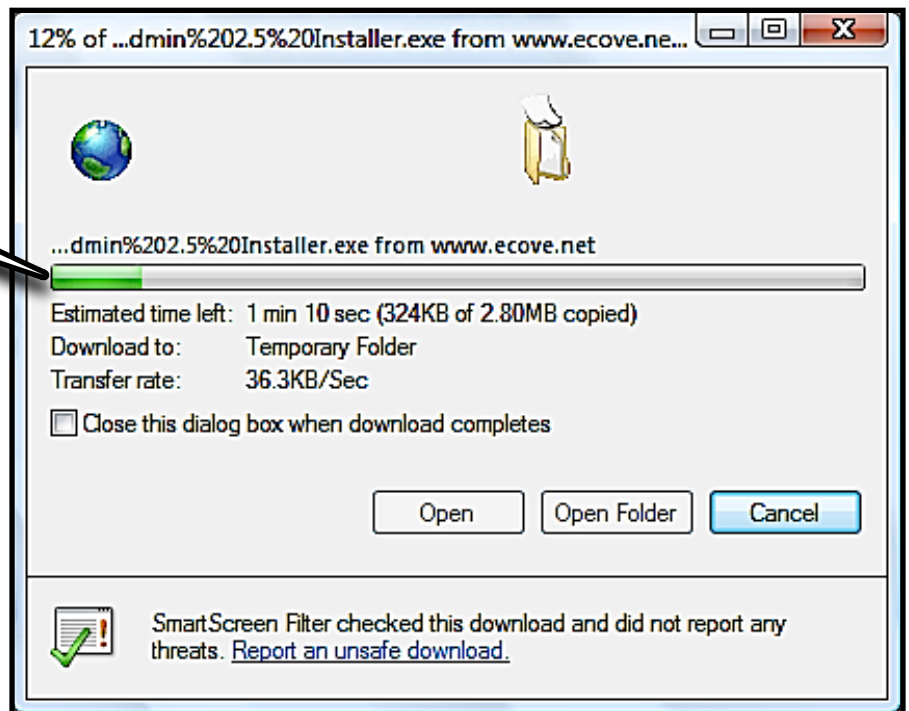
4

THIS WINDOW APPEARS. CLICK RUN.



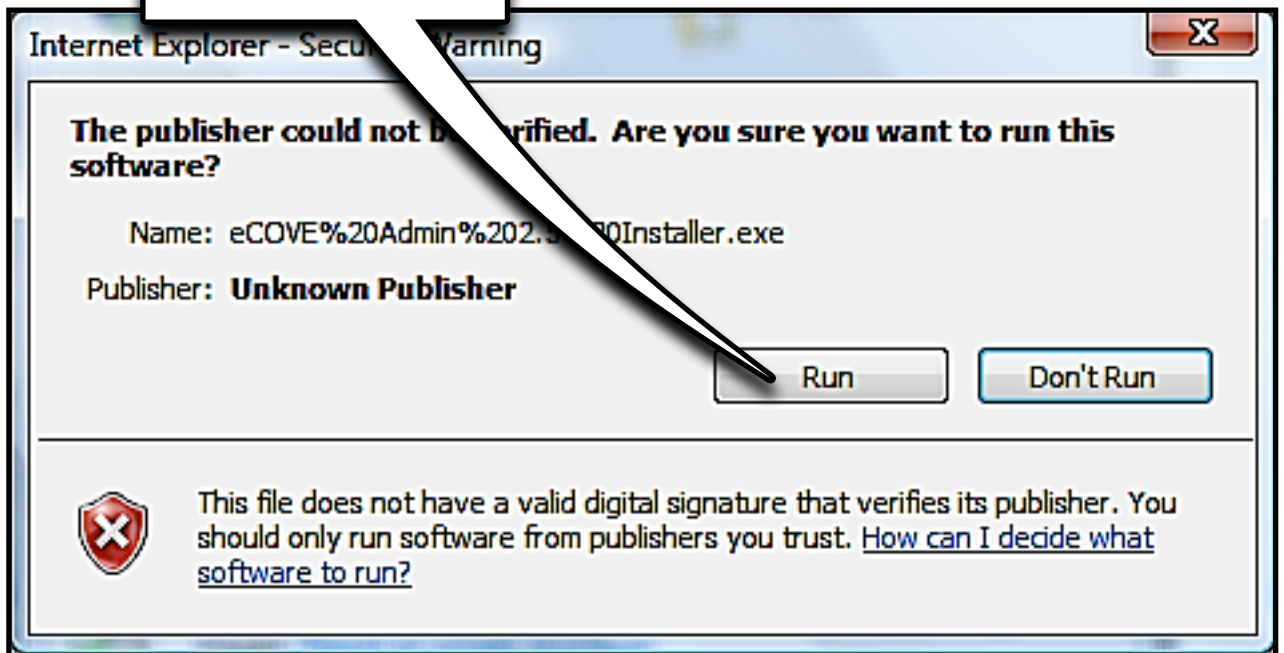
5

YOU'LL SEE THE  
PROGRESS BAR MOVING



6

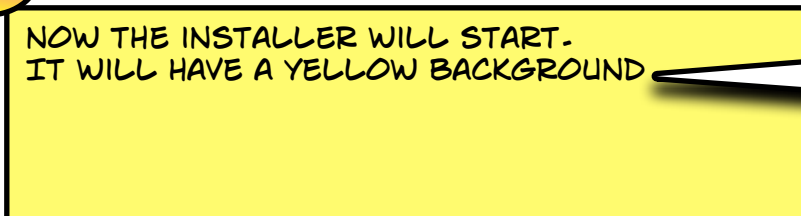
THEN YOU'LL GET  
ANOTHER WARNING.  
CLICK RUN AGAIN



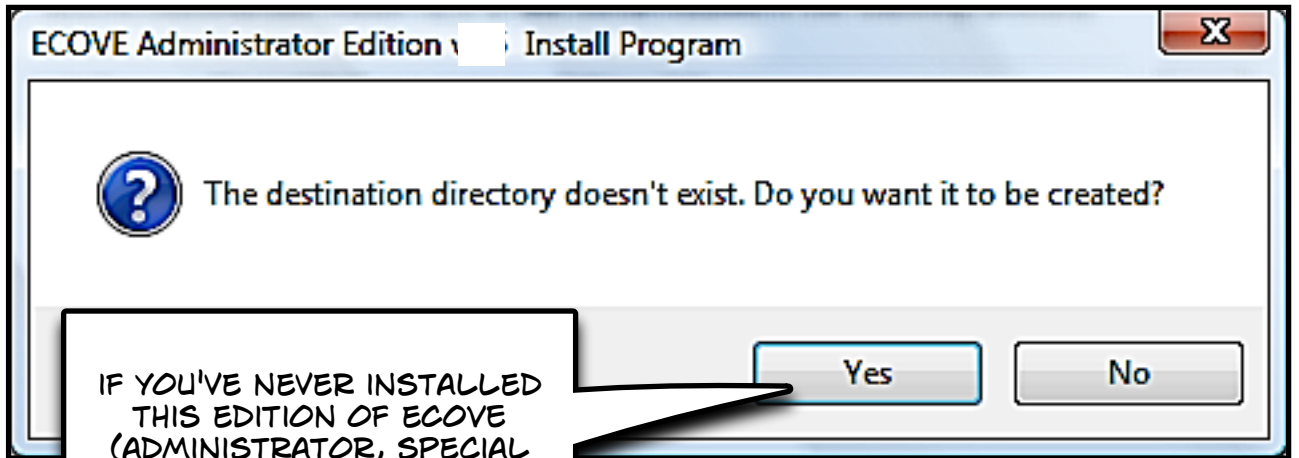
7

NOW THE INSTALLER WILL START.  
IT WILL HAVE A YELLOW BACKGROUND

JUST CLICK  
NEXT AND  
WORK YOUR  
WAY  
THROUGH THE  
INSTALLER.



8

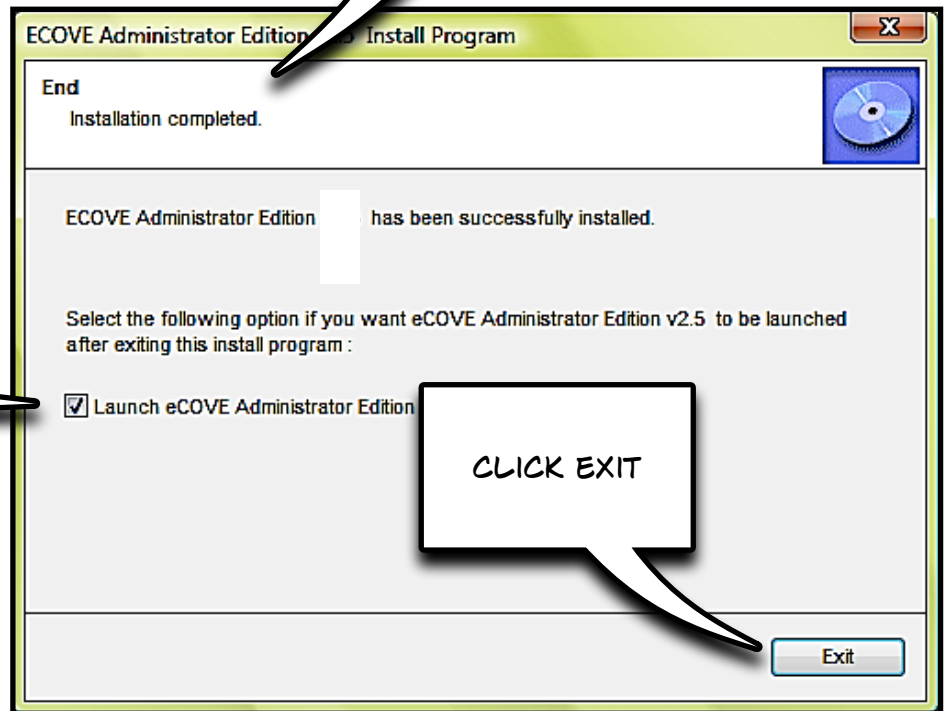


IF YOU'VE NEVER INSTALLED THIS EDITION OF ECOVE (ADMINISTRATOR, SPECIAL EDUCATION, ESL, GENERAL), YOU'LL GET THIS WINDOW.

CLICK YES

9

YOU'LL COME TO THIS FINAL WINDOW, AND YOU'RE FINISHED.



LEAVE THIS CHECKED AND ECOVE WILL OPEN AUTOMATICALLY

CLICK EXIT

10

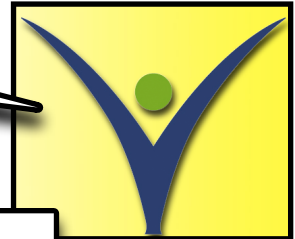
ECOVE WILL OPEN AND YOU CAN ENTER THE INFORMATION ON THE REGISTRATION PAGE.

CLICK '...BEGIN TRIAL...' IF YOU'RE JUST EXPLORING,

OR ENTER THE LICENSE KEY AND CLICK 'REGISTER LICENSE KEY'

11

THERE WILL BE A SHORTCUT ON YOUR DESKTOP. THE NEXT TIME YOU WANT TO RUN ECOVE, LOOK FOR THE 'YIPPEE MAN'



THE BACKGROUND WILL BE WHATEVER YOUR DESKTOP COLOR IS, BUT THE YIPPEE MAN WILL BE THERE.

**IF YOU HAVE ANY PROBLEMS, EMAIL  
SUPPORT@ECOVE.NET  
OR  
CALL 888-363-2683**